



HENRY S. MILLER

# ±3.337 ACRE CORNER LOT - FOR SALE

## 1100 PLEASANT VALLEY RD. GARLAND, TX



### PROPERTY OVERVIEW

### LOCATION

#### LOCATION

1100 Pleasant Valley Rd. Garland, TX 75040

#### FRONTAGE

Pleasant Valley Rd. & N. Country Club Rd.

#### PROPERTY SIZE

±3.337 Acres (±145,360)

#### UTILITIES

Available to the site

#### ZONING

Shopping Center- A. District

#### PRICE

\$5.00/ SF (\$726,800) - 3.37 Acres

\$7.00/SF (\$305,000) - ±1 Acre hard corner



## CONTACT

Broker for more information

**LANE KOMMER, SVP**

Investments/Land Division

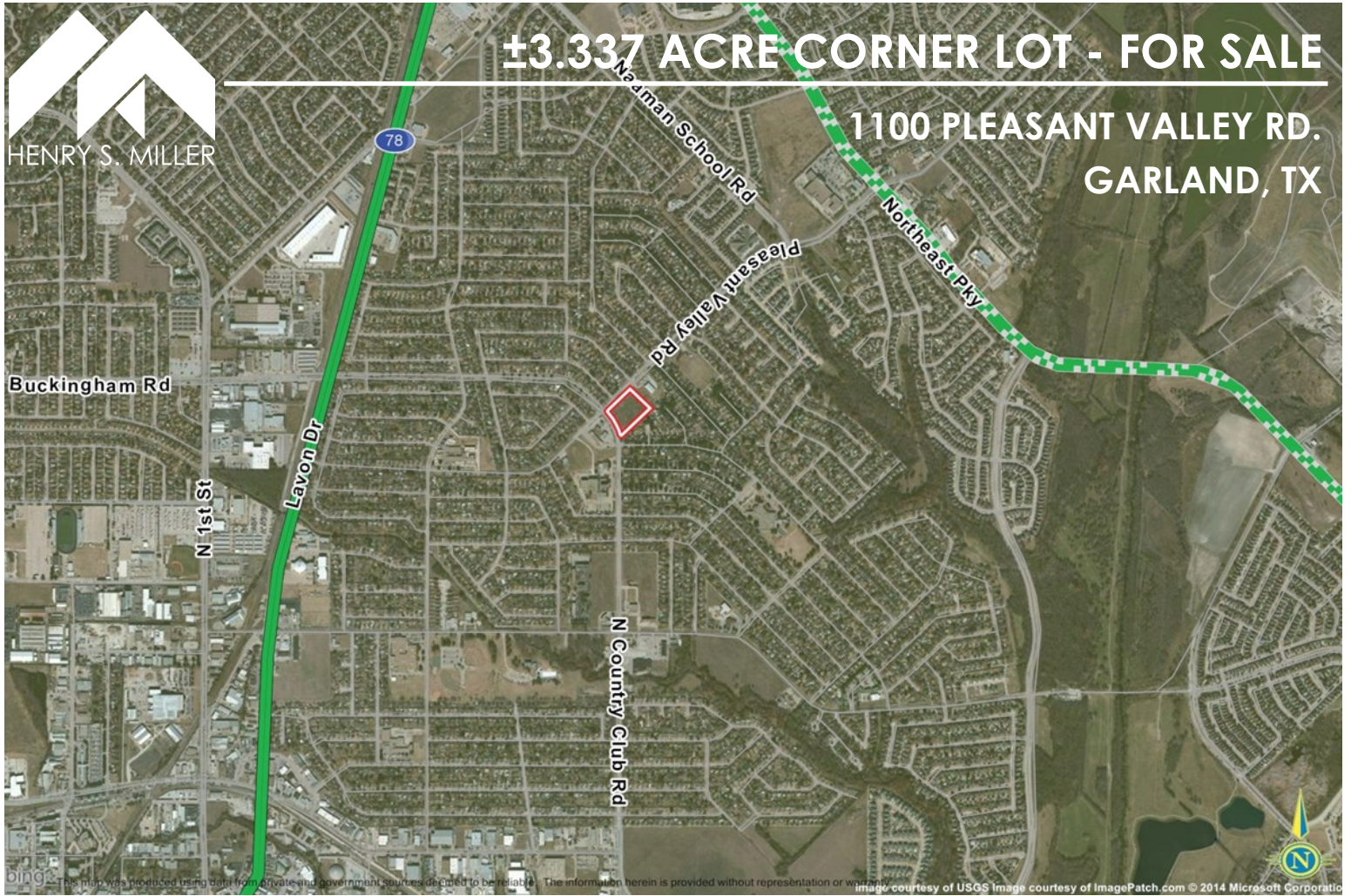
**p** 972.419.4093 **m** 469.258.0088 **e** [lkommer@henrysmiller.com](mailto:lkommer@henrysmiller.com)



HENRY S. MILLER

# ±3.337 ACRE CORNER LOT - FOR SALE

## 1100 PLEASANT VALLEY RD. GARLAND, TX



This map was produced using data from private and government sources deemed to be reliable. The information herein is provided without representation or warranty. Image courtesy of USGS Image courtesy of ImagePatch.com © 2014 Microsoft Corporation

<b>DEMOGRAPHICS</b>   2017	<b>1 Mile</b>	<b>3 Miles</b>	<b>5 Miles</b>
Estimated Population	18,665	112,677	278,807
Estimated Households	5,295	34,978	90,059
Average HH Income	\$69,530	\$76,137	\$85,571
Total Businesses	305	2,498	6,932
Total Employees	3,133	29,200	77,503