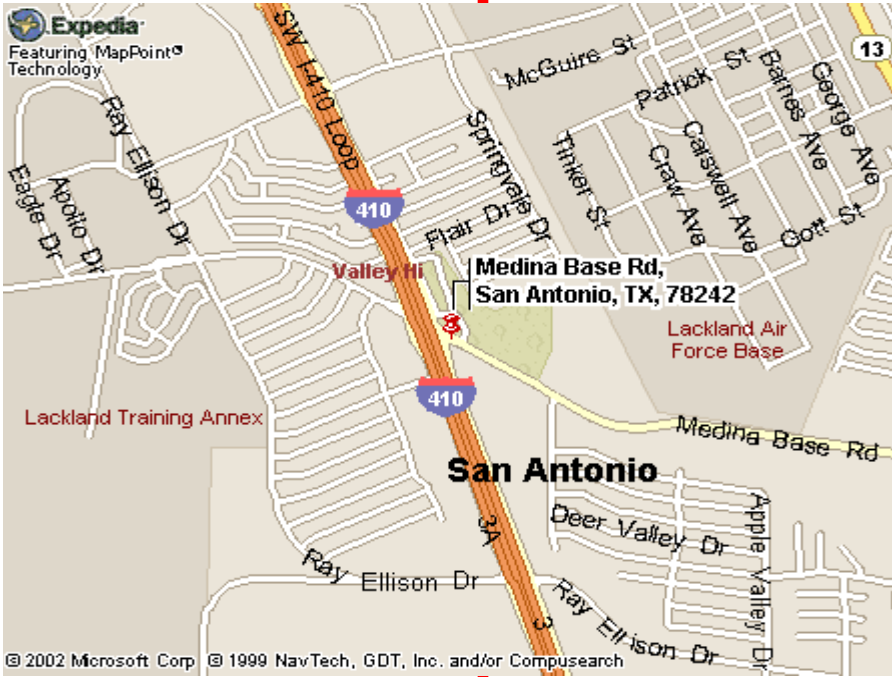


# PAD SITE

# LOOP 410 AT MEDINA BASE RD

- **Approx. 2.98 acres**  
or **129,808.80 sf.**
- **At the hard corner of Loop 410 at Medina Base Road.**
- **Zoning pending C-2.**
- **New housing developments planned by Continental, Obra, Armadillo, KBHome.**
- **Adjacent to new KB Homes subdivision comprising of 202 homes**
- **Approx. 543 ft of frontage on Loop 410; 392 feet of depth.**
- **Traffic counts: 30,000 cars per day. (TXDOT 2000).**
- **Topography is relatively flat.**
- **All utilities available.**
- **Offering Price:**  
**\$2,596,176.00**  
or **\$20.00/sf**



**For Information call:**

**Henry S. Miller Commercial**

**Keith A. Coelho**

**(210) 821-5323**

[kcoelho@henrysmiller.com](mailto:kcoelho@henrysmiller.com)



# HENRY S. MILLER COMMERCIAL

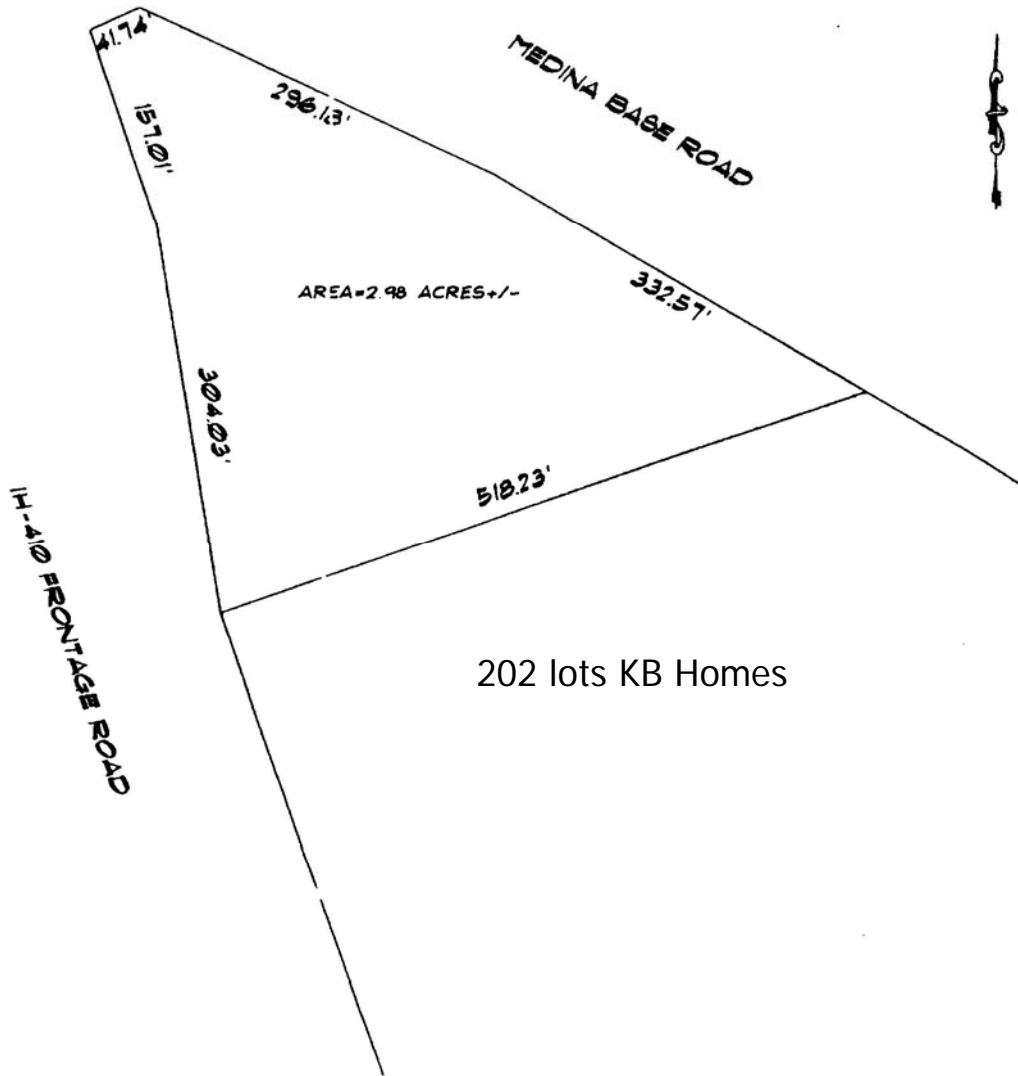
12000 Huebner Road, Suite 202, San Antonio, TX 78230 Ph. (210) 821-5323 Fx. (210) 495-8682

Visit our website at <http://www.henrysmiller.com>

Since 1914

The information contained herein was obtained from sources believed reliable; however, Henry S. Miller Commercial makes no guarantees, warranties or representations as to the completeness or accuracy thereof. The presentation of this property is submitted subject to errors, omissions, change of price or conditions, prior sale or lease, or withdrawal without notice.

# Loop 410 at Medina Base Road



HENRY S. MILLER COMMERCIAL

