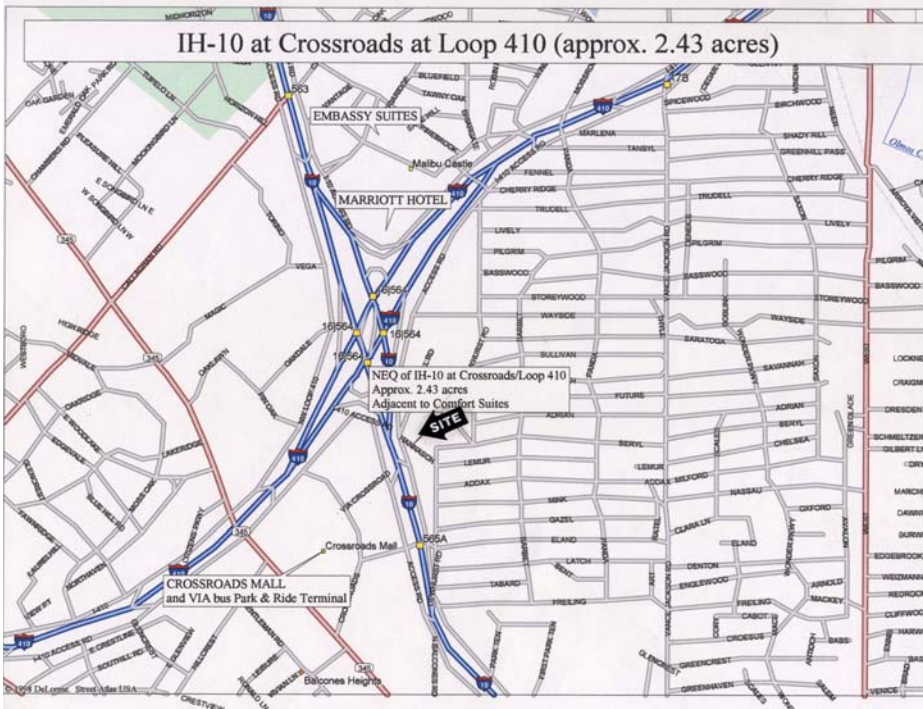
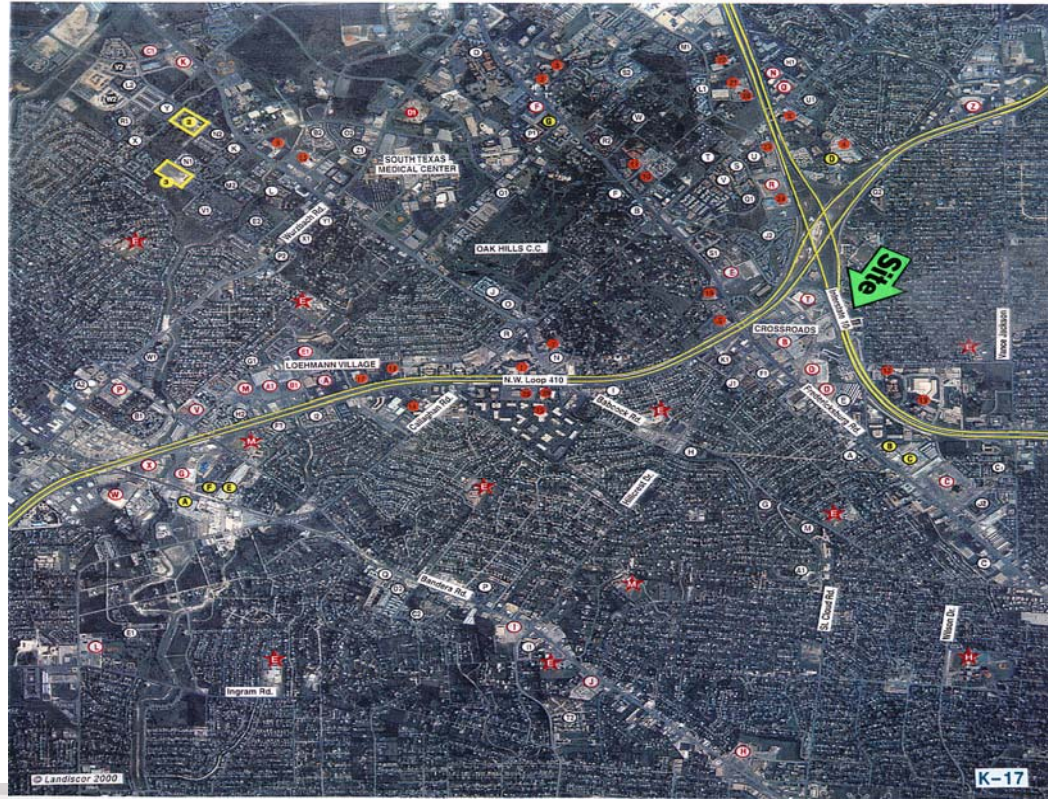


PAD SITE AVAILABLE

INTERSTATE 10 AT CROSSROADS BLVD AT LOOP 410

- Approx. 2.43 acres or 105,850 sf.
- Across from new MedCath Heart Hospital; Crossroads Mall; Super Target; VIA Transit Park & Ride.
- Adjacent to Comfort Suites and Texaco Station.
- Approx. 8 miles to CBD.
- Approx. 600 ft of frontage on IH-10.
- Traffic counts: 172,000 cars per day. (TXDOT 2000).
- Topography is relatively flat with a gentle slope from south to northeast.
- All utilities available.



For Information call:

Henry S. Miller Commercial

Keith A. Coelho
(210) 821-5323
kcoelho@henrysmiller.com



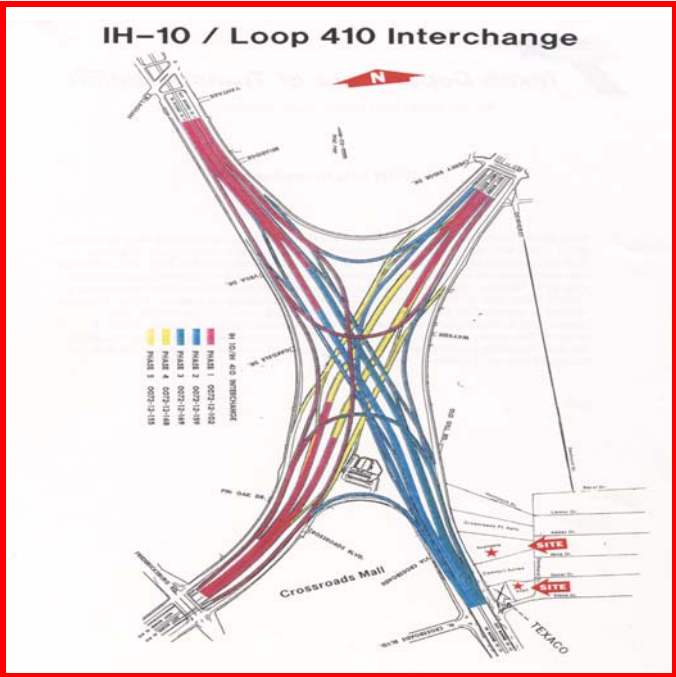
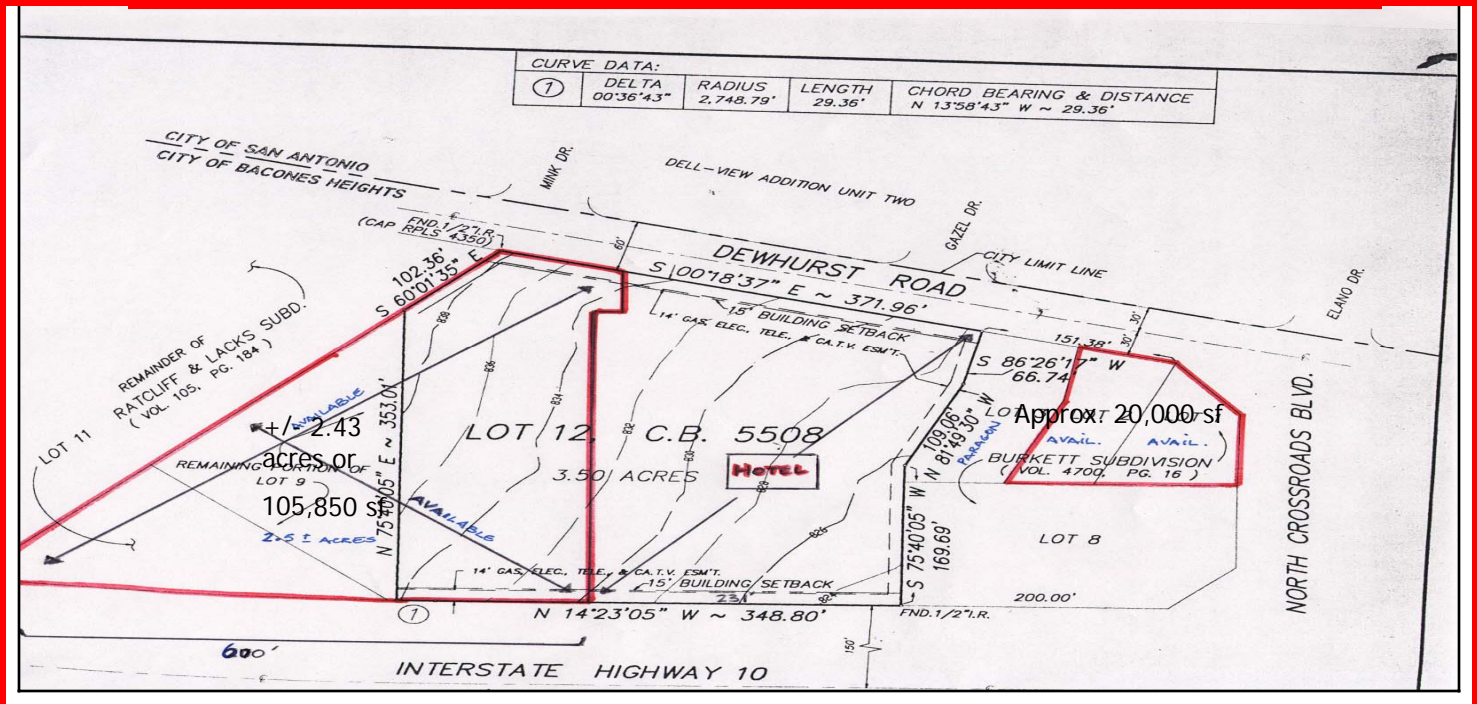
HENRY S. MILLER COMMERCIAL

12770 Cimarron Path, Suite 122, San Antonio, TX 78249 Ph.(210)821-5323 Fx.(210)495-8682

Visit our website at www.henrysmiller.com

The information contained herein was obtained from sources believed reliable; however, Henry S. Miller Commercial makes no guarantees, warranties or representations as to the completeness or accuracy thereof. The presentation of this property is submitted subject to errors, omissions, change of price or conditions, prior sale or lease, or withdrawal without notice.

Interstate 10 at Crossroads Blvd at Loop 410



HENRY S. MILLER COMMERCIAL