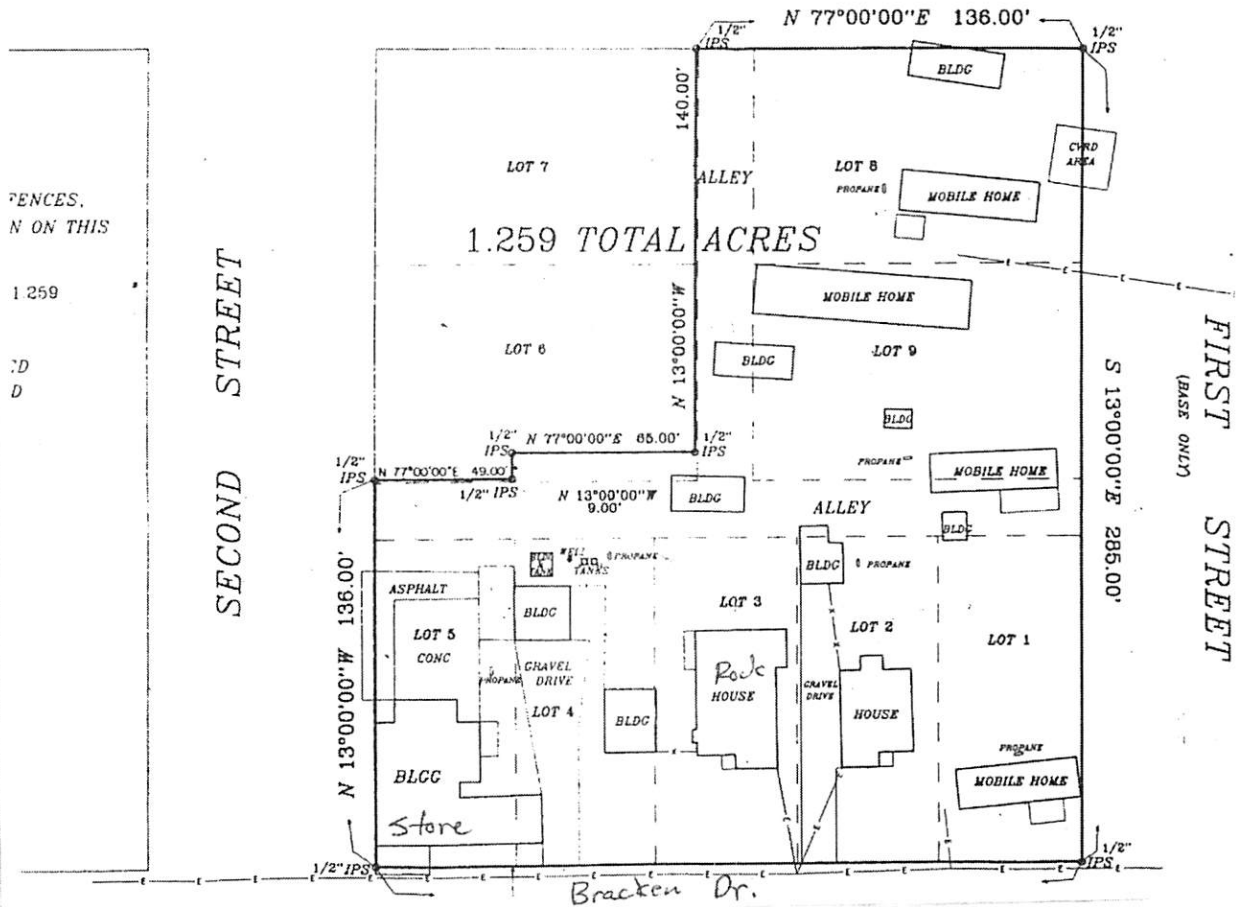


Sherman Krause  
Comal County Judge

Enclosures (2)

150 N. Seguin Avenue New Braunfels, Texas 78130 830-221-1100 Fax: 830-608-2026



Donna Eccleston  
Precinct #1

Scott Haag  
Precinct #2



Sherman Krause  
County Judge

Kevin Webb  
Precinct #3

Jan Kennady  
Precinct #4

COMMISSIONERS COURT OF COMAL COUNTY TEXAS

November 1<sup>st</sup>, 2013

MR. WILLIAM N WETZ



Google earth

feet  
meters

